

exkal

e FOR FUTURE GENERATIONS

ISLAS PLUGIN **TENERIFE**

SOSTENIBLE Y MONOCASCO / SUSTAINABLE AND MONOBLOCK /
DURABLE ET MONOCOQUE / NACHHALTIG UND MONOBLOCK

+ **VISIÓN PRODUCTO** / PRODUCT VISIBILITY / VISIBILITÉ PRODUITS /
PRODUKPRÄSENTATION

ERGONOMÍA / ERGONOMY / ERGONOMIE / ERGONOMIE

OPTIMIZACIÓN ESPACIO VENTA / RETAIL FOOTPRINT
OPTIMIZATION / RETAIL FOOTPRINT OPTIMISATION /
VERKAUFSFLÄCHENOPTIMIERUNG

+ **ÁREA TOTAL EXPOSICIÓN** / TOTAL DISPLAY AREA / TDA / TDA



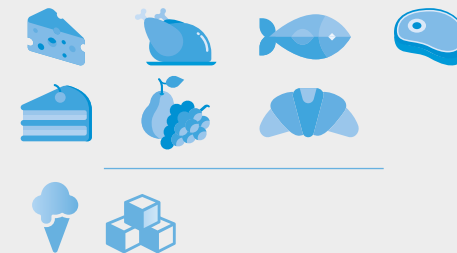
ISLASINTEGRALES

exkalsa.com

ISLAS / ISLANDS / ILOTS / INSELN

3M1

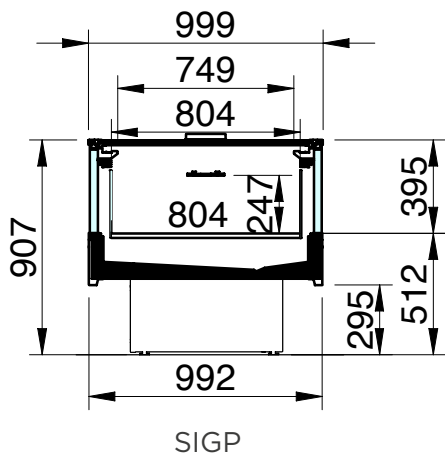
3L3

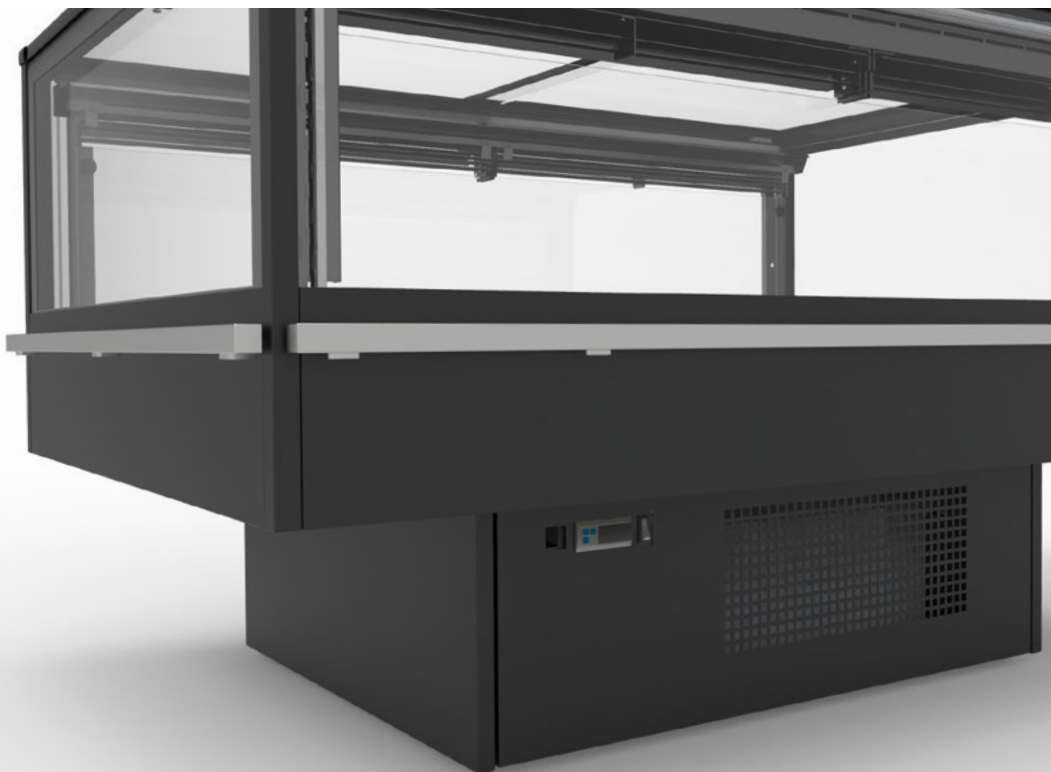
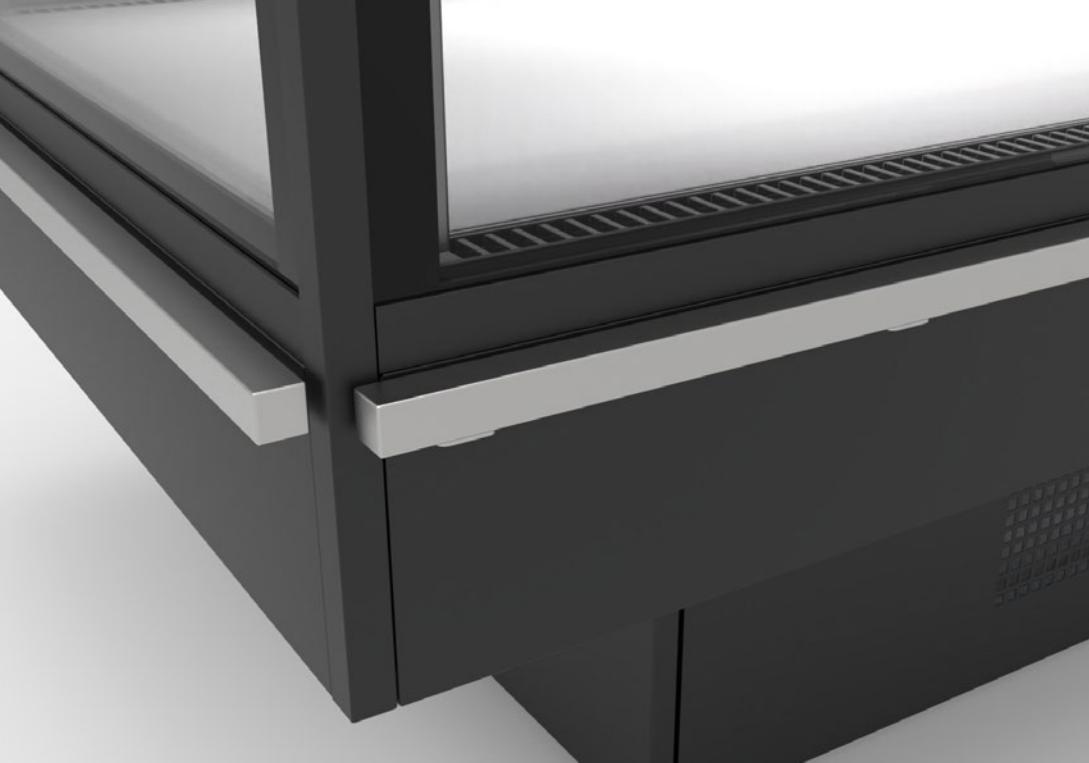


		2			3				
mm		1510			2010				
		TDA	Vol	Suf	TDA	Vol	Suf		
		m ²	l	m ²	m ²	l	m ²		
A T G	D	SIGP1	3M1	2,17	280	1,1	2,8	379	1,49
A T G	E	SIGP15	3M1 & 3L3	2,17	280	1,1	2,8	379	1,49

TDA = Área Total de Exposición / Total Display Area / Zone d'affichage totale / Gesamtausstellungsfläche • Vol = Volumen neto / Net volume / Volume net / Nettovolumen • Suf = Superficie de exposición / Exhibition surface / Surface d'exposition / Ausstellungsfläche.
Best energy class model. More information at EPREL or contact our Sales Department.

SECCIONES / SECTIONS / SECTIONS / SCHNITTE





exkal

FOR FUTURE GENERATIONS

Pol. Ind. El Campillo, C/A Nº 1, 31340, Marcilla, Navarra
(España - Spain)
+34 948 708 292 | exkalsa@exkalsa.com | exkalsa.com

exkal
CONCEPT

exkalconcept.com

horexkal



horexkal.com

