

exkal

e FOR FUTURE GENERATIONS

ARMARIO PLUGIN LOW FRONT **NEDA**

SOSTENIBLE Y MONOCASCO / SUSTAINABLE AND MONOBLOCK /
DURABLE ET MONOCOQUE / NACHHALTIG UND MONOBLOCK

+ **VISIÓN PRODUCTO** / PRODUCT VISIBILITY / VISIBILITÉ PRODUITS /
PRODUKPRÄSENTATION

ERGONOMÍA & PUERTA BATIENTE / ERGONOMY & HINGED DOORS /
ERGONOMIE & SWING PORTES / ERGONOMIE & DREHTÜR

OPTIMIZACIÓN ESPACIO VENTA / RETAIL FOOTPRINT
OPTIMIZATION / RETAIL FOOTPRINT OPTIMISATION /
VERKAUFSFLÄCHENOPTIMIERUNG

+ **ÁREA TOTAL EXPOSICIÓN** / TOTAL DISPLAY AREA / TDA / TDA



NEDA
ARMARIO INTEGRALES

exkalsa.com

ARMARIO FRENTE BAJO / FULL GLASS DOOR LOW FRONT /
ARMOIRE AVANT SOUS / SCHRÄNKE FRONT UNTER

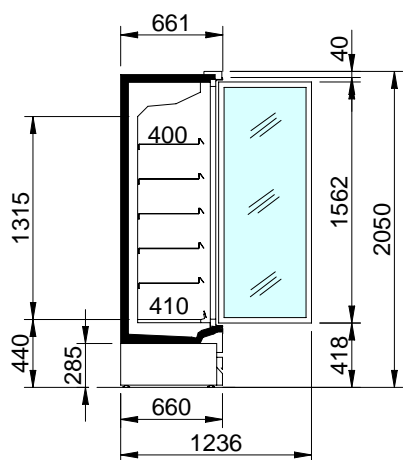
3L3



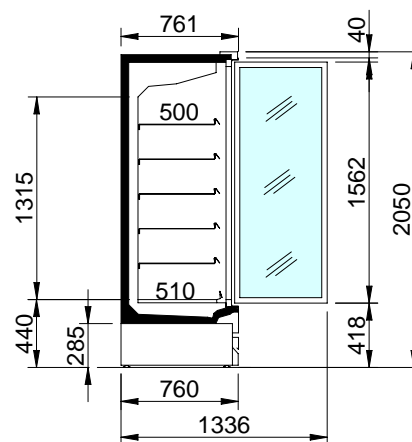
	1			2			3			4		
mm	625			1250			1875			2500		
	TDA	Vol	Suf	TDA	Vol	Suf	TDA	Vol	Suf	TDA	Vol	Suf
	m ²	l	m ²	m ²	l	m ²	m ²	l	m ²	m ²	l	m ²
IDLI	0,76	357	1,51	1,52	700	3,02	2,28	1050	4,53	3,04	1400	6,04
IDLC	0,76	446	1,87	1,51	875	3,74	2,27	1313	5,61	3,02	1750	7,48

TDA = Área Total de Exposición / Total Display Area / Zone d'affichage totale / Gesamtausstellungsfläche • Vol = Volumen neto / Net volume / Volume net / Nettovolumen • Suf = Superficie de exposición / Exhibition surface / Surface d'exposition / Ausstellungsfläche.
Best energy class model. More information at EPREL or contact our Sales Department.

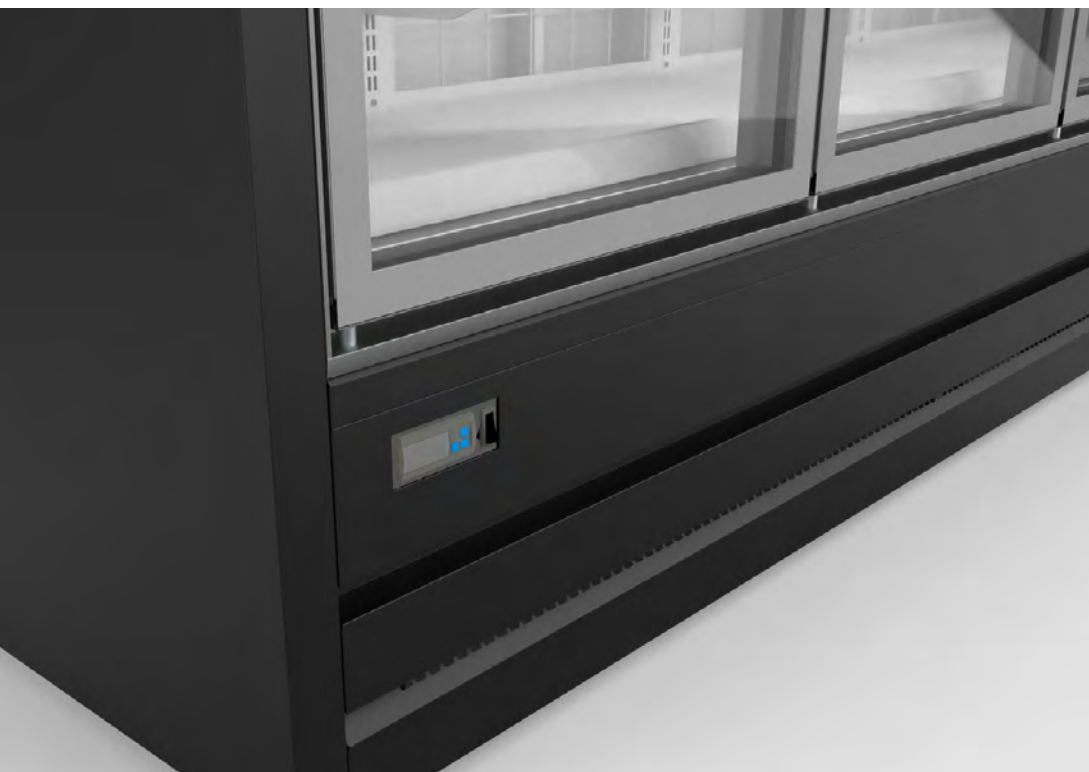
SECCIONES / SECTIONS / SECTIONS / SCHNITTE



IDLI5-



IDLC5-



exkal

FOR FUTURE GENERATIONS

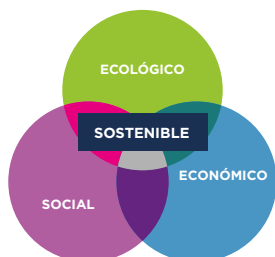
Pol. Ind. El Campillo, C/A N° 1, 31340, Marcilla, Navarra
(España - Spain)
+34 948 708 292 | exkalsa@exkalsa.com | exkalsa.com

exkal
CONCEPT

exkalconcept.com

horexkal
| 

horexkal.com




**OBJETIVOS
DE DESARROLLO
SOSTENIBLE**



SR-0009-ES



SI-0011/2021



ER-0149/2011



SST-0022/2011



GA-2011/0074

